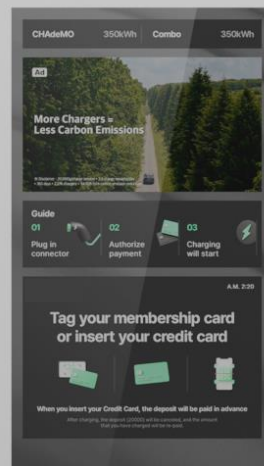


Konect

All-in-One 200 kW
EV Charger

Technical Specifications

Electrifying futures



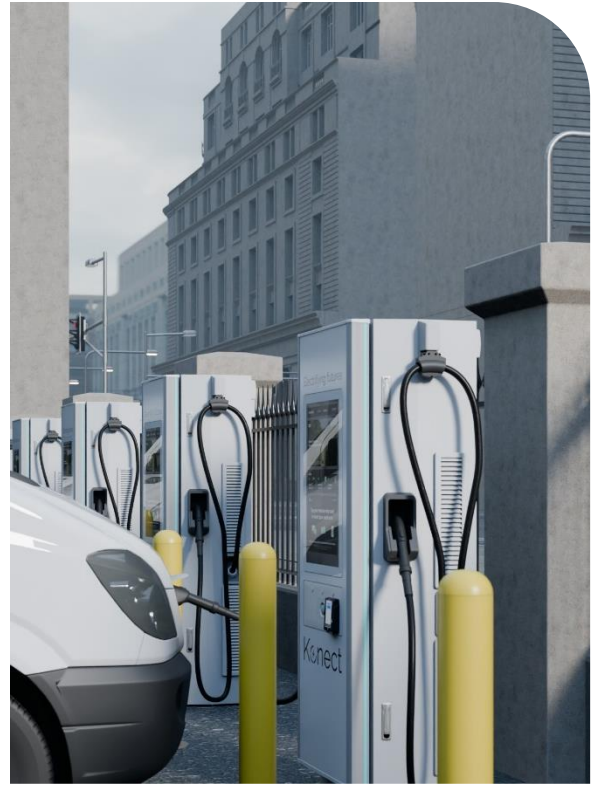
Konect

All-in-One 200 kW EV Charger

Elevate your forecourt or fleet home-base depot's electric vehicle infrastructure with the sleek, powerful All-in-One 200kW Charger, where cutting-edge technology meets stylish design that delivers an unparalleled charging experience.

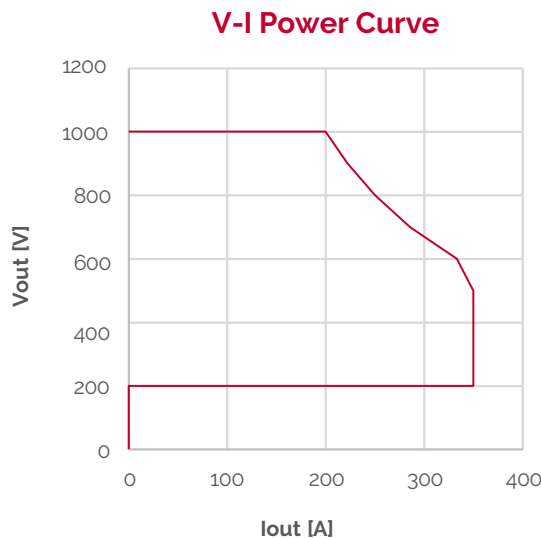
The All-in-One charger is not just a piece of equipment, but a statement of sophistication and efficiency.







Whether you require a single unit or a comprehensive array of chargers, our All-in-One 200 kW Charger is designed to cater to your specific needs, ensuring that your business remains at the forefront of sustainable mobility.



Technical Specifications

This document provides technical specifications for the All-in-One 200 kW EV Charger:



-  Forced Air Cooling for Power Unit, Liquid Cooling for Dispenser
-  Max. Efficiency \geq 95%
-  NEMA3R Protection
-  Surge Protection for DC & AC
-  Touch Screen Display
-  Simultaneous Charging

Charger Specifications

	North America	Europe
Input		
Nominal AC Power	211 kW	
Input Voltage Range	480 Vac \pm 10 %, 3P4W (R,S,T,N)+PE, TN-S	400 Vac \pm 10 %, 3P4W (R,S,T,N)+PE, TN-S
Rated AC Grid Frequency	50 Hz / 60 Hz	
Max. Current	\leq 254 A	\leq 305 A
Adjustable Power Factor Range	\geq 0.99 (@ Load 100%, 480 Vac \pm 10%)	\geq 0.99 (@ Load 100%, 400 Vac \pm 10 %)
Efficiency		
Efficiency	\geq 95% (@ Load 100%)	
Output		
Nominal Output Power	200 kW	
Operating Voltage Range	150 Vdc ~ 1,000 Vdc	
Max. Current	CCS1 (Air Cooled) 350 A (Boost 500A, within 10 min @+25°C) or NACS (Air Cooled) 350 A (Boost 500A, within 10 min @+25°C)	CCS2 (Air Cooled) 350 A (Boost 500A, within 10 min @+25°C)
Metering Accuracy	$>$ 99%	
Power Sharing Charging Scenario	Active Power Sharing, 100 kW increments, Simultaneous charging	
Communication		
User Interface	32 Inch/FHD(1920x1080)/Touch Screen (English, Spanish), Operation Buttons (3 buttons), Emergency Stop Button	
Control Interface Protocol	OCPP 1.6J (Core : Supported), OCPP2.0.1(Core : Supported)	
Charging Interface Protocol	DIN70121, ISO15118-2 (PnC)	
User Authentication	RFID (ISO/IEC14443 A/B, ISO15693), NFC, IC Reader, QR Code (Option)	
Payment Terminal	Invenco by GVR FlexPay 6 A2-05	
Network Connection	Ethernet, 4G, LTE Modem	
General		
Dimensions (W x D x H)	700 x 830 x 2,050 mm	
Weight (with mounting plate)	493 kg	
Operating Temperature Range	-35°C to +55°C (with derating @45°C) / -31°F to +131°F	
Storage Temperature Range	-40°C to +70°C / -40°F to +158°F	
Cooling Method	Forced Air Cooling	
Max. Operating Altitude	2,000m (6,561ft)	
Relative Humidity	5 ~95 % (Non-condensing)	
DC Cable (2ea)	CCS1/CCS1 or CCS1/NACS	CCS2/CCS2
	Length : 5.5m (Outside Length = External Cable + Connector head), Cable Management	

Charger Specifications

	North America	Europe
General		
Operating Noise	< 70dB @ 1m	
Protection	Over Voltage, Over Current, Proximity Loss, FG Disconnection Detect, AC Surge, DC Surge, Insulation Monitor Device, NEMA 3R, IK10 (Touch screen, IK08)	
Standards Compliance	NRTL (UL), FCC Part 15, UL2202, UL2231-1, UL2231-2, UL991, UL1998, CSA, Energy Star, CTEP (NTEP), ADA, IEC 61851-23, IEC 61851-24 *CTEP/NTEP Certified with current SW.	CE, EMC, IEC 61851-23, IEC 61851-24, MID

All-in-One 200 kW EV Charger

Electrifying futures.

Find out how your forecourt or fleet depot
could benefit from our end-to-end
EV charging ecosystem solutions.

Europe: www.gilbarco.com/eu/
North America: www.gilbarco.com/us/

Konect

