

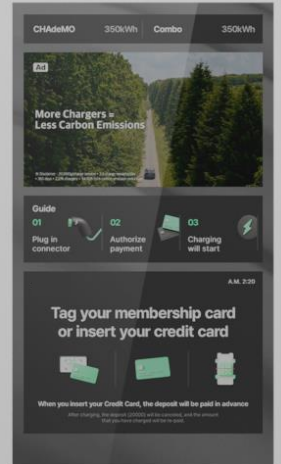
Konect

Distributed 600 kW
Fast Charging System

4 Dispensers and 1 Power Unit

Technical Specifications

Electrifying futures

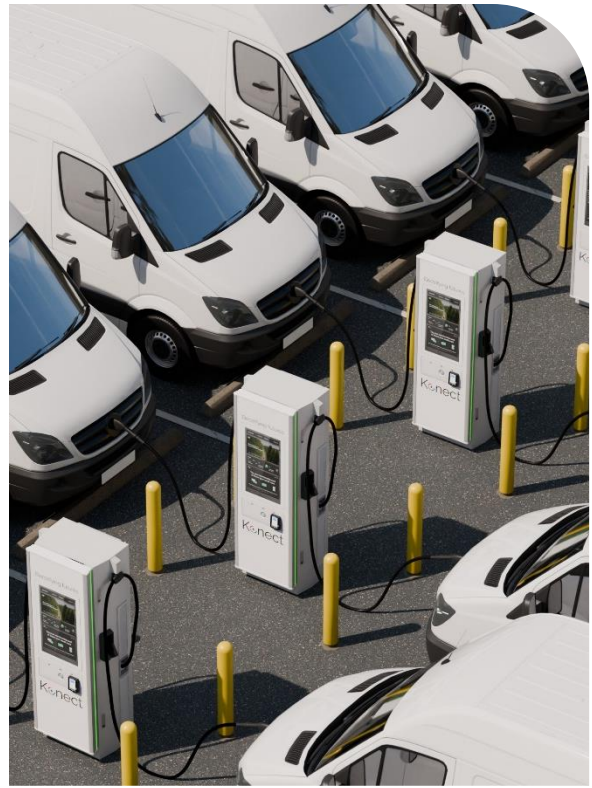


Konect

Distributed 600kW Fast Charging System

Discover the future of EV charging with our cutting-edge distributed 600kW fast charging system that boasts the fastest and most efficient charging capabilities on the market today. Delivering up to 400kW power output per connector, it enables single charging for up to four vehicles that offer 100 miles or 160 kilometers of range within 5 minutes of charging.







The distributed 600kW fast charging system simplifies maintenance with its modular design and captivates users with a durable 32-inch LCD screen that supports both interaction and advertising, ensuring reliability and quality.



Technical Specifications

This document provides technical specifications for the distributed 600kW Fast Charging System, comprising four 400 kW dispensers and a 600kW power unit:



-  Forced Air Cooling for Power Unit, Liquid Cooling for Dispenser
-  Max. Efficiency \geq 95%
-  NEMA3R Protection
-  Surge Protection for DC & AC
-  Touch Screen Display
-  Simultaneous Charging

Dispenser Specifications

	North America
Input	
Nominal Power	400 kW
Input Voltage Range	200 Vdc ~ 1,000 Vdc for Charging, 277Vac for Control (200 W)
Max. Current	500 A
Output	
Nominal Power	400 kW
Operating Voltage Range	200 Vdc ~ 1,000 Vdc
Max. Current	CCS1 (Liquid Cooled) 500 A or NACS (Liquid Cooled) 500 A
Metering Accuracy	>99%
Power Sharing Charging Scenario	Active Power Sharing, 50kW increments, Simultaneous charging
User Interface	32 Inch (Option)/FHD(1920x1080)/Touch Screen (English, Spanish) 15 Inch (Option)/FHD(1024*768)/Touch Screen (English, Spanish) Operation Buttons (3 buttons) Emergency Stop Button
Control Interface Protocol	OCPP 1.6J (Core : Supported), OCPP2.0.1 (Core : Supported)
Charging Interface Protocol	DIN70121, ISO15118-2 (PnC)
User Authentication	RFID (ISO/IEC14443 A/B, ISO15693), NFC, IC Reader
Payment Terminal	Invenco by GVR FlexPay 6 A2-05
Network Connection	Ethernet, 4G, LTE Modem
General	
Dimensions (W x D x H)	700 x 550 x 2,050 mm
Weight (with mounting plate)	320 kg
Operating Temperature Range	-35°C to +55°C (with derating @45°C) / -31°F to +131°F
Storage Temperature Range	-40°C to +70°C / -40°F to +158°F
Cooling Method	Forced Air Cooling
Max. Operating Altitude	2,000m (6,561ft)
Relative Humidity	5 ~95 % (Non-condensing)
DC Cable (2ea)	CCS1/CCS1 or CCS1/NACS
	Length : 5.5m (Outside Length = External Cable + Connector head), Cable Management
Operating Noise	< 70dB @ 1m
Protection	Over Temperature, Over Voltage, Over Current, Proximity Loss, FG Disconnection Detect, DC Surge, & Insulation Monitor & Protection, IP55, NEMA 3R, IK10 (Touch screen, IK08)
Standards Compliance	NRTL (UL), FCC Part 15, UL2202, UL2231-1, UL2231-2, UL991, UL1998, CSA, Energy Star, CTEP (NTEP), ADA, IEC 61851-23, IEC 61851-24 *CTEP/NTEP Certified with current SW.

Power Unit Specifications

	North America
Input	
Nominal AC Power	632 kW
Nominal Input Voltage	AC480V±10% / 3P4W(R,S,T,N)+PE
Rated AC Grid Frequency	50 Hz / 60 Hz
Max. Current	≤ 760 A
Adjustable Power Factor Range	≥ 0.99 (@ Load 100%, AC480V±10%)
Efficiency	
Max. Efficiency	≥ 95% (@ Load 100%)
Output	
Nominal Output Power	600 kW
Operating Voltage Range	200 Vdc ~ 1,000 Vdc
Max. Current	2,000 A
Power Sharing Charging Scenario	Active Power Sharing, 50kW increments
General	
Dimensions (W x D x H)	1,750mm x 1,000mm x 2,150mm
Weight (with mounting plate)	1,200 kg
Operating Temperature Range	-35°C to +55°C (with derating @45°C) / -31°F to +131°F
Storage Temperature Range	-40°C to +70°C / -40°F to +158°F
Cooling Method	Forced Air Cooling
Max. Operating Altitude	2,000m (6,561ft)
Relative Humidity	5 ~95 % (Non-condensing)
Protection	Over Temperature, Over Voltage, Over Current, AC Surge, NEMA 3R, IK10
Operating Noise	< 70dB @ 1m
Standards Compliance	NRTL (UL), FCC Part 15, UL2202, UL2231-1, UL2231-2, UL991, UL1998, CSA, Energy Star, IEC 61851-23, IEC 61851-24

Distributed 600 kW Fast Charging System

4 Dispensers and 1 Power Unit

Electrifying futures.

Find out how your forecourt or fleet depot
could benefit from our end-to-end
EV charging ecosystem solutions.

Europe: www.gilbarco.com/eu/
North America: www.gilbarco.com/us/

Konect

